

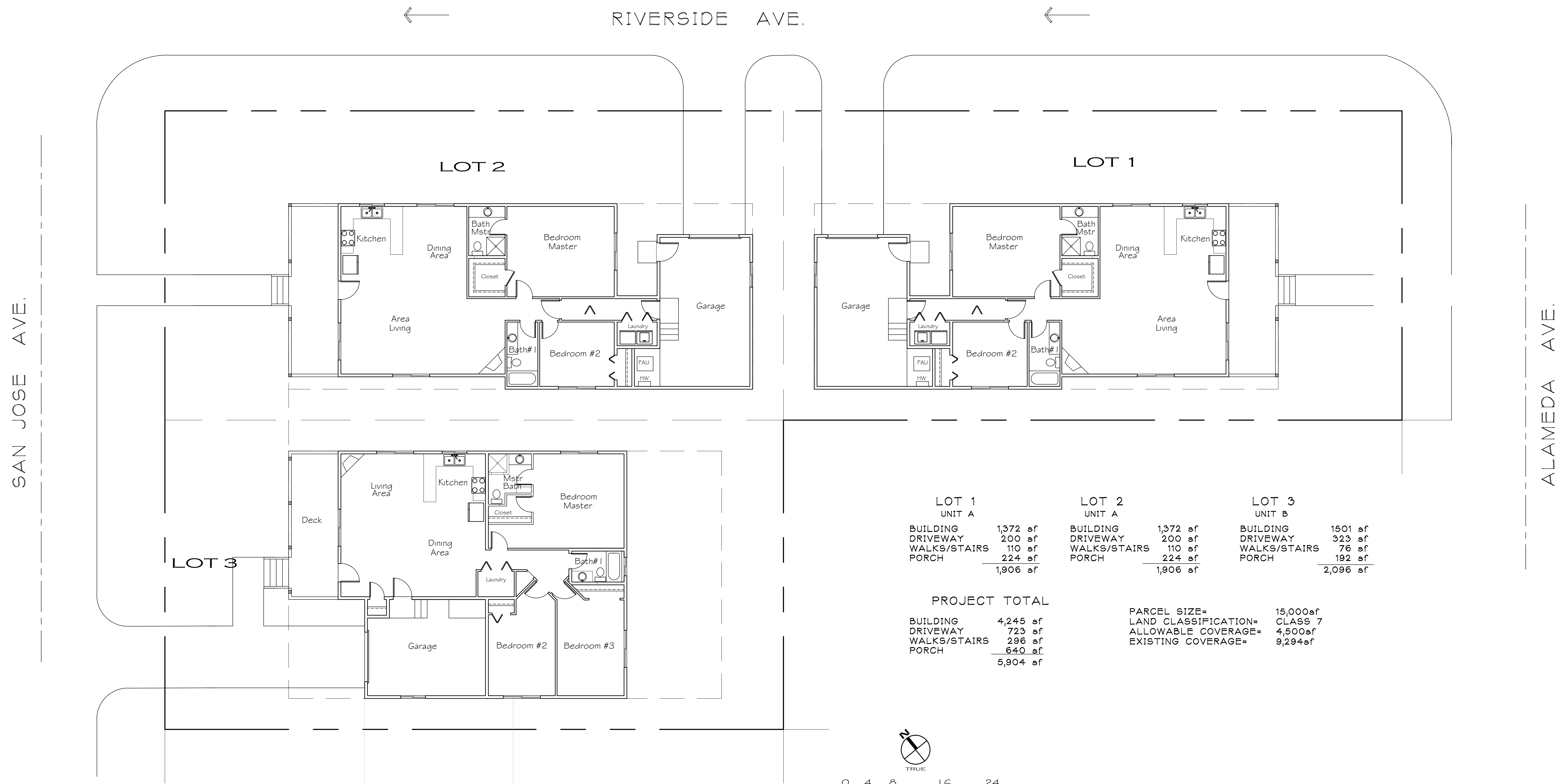
The plans, ideas, arrangements, and design indicated or represented by this drawing are owned by, and are the property of BRIAN SHINAULT AIA, ARCHITECT, and in connection with this specific project, or shall not be used, in whole or in part, for any purpose for which they were not originally intended without written permission from BRIAN SHINAULT AIA ARCHITECT. © 2021

BRIAN SHINAULT AIA ARCHITECT reserves his common law copyright and other property rights in these plans, specifications, & ideas. These documents are not to be reproduced, changed, copied in any form or manner whatsoever nor are they to be assigned to any third party without obtaining written permission or consent of BRIAN SHINAULT AIA ARCHITECT.

BRIAN SHINAULT AIA ARCHITECT

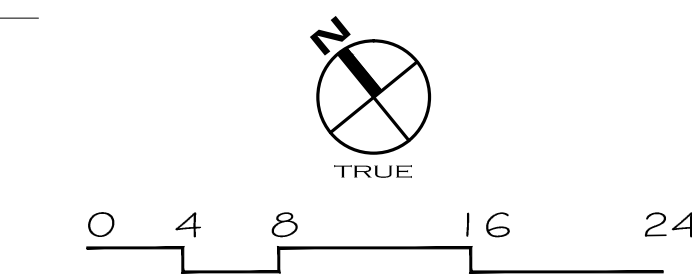
ARIZONA 38032
CALIFORNIA C-13916
HAWAII AR 10835
NEVADA 3018
870 EMERALD BAY RD.
SUITE 109
SOUTH LAKE TAHOE,
CALIFORNIA 96150
530.541.5116
BRIAN@BSATAHOC.COM

REVISION:



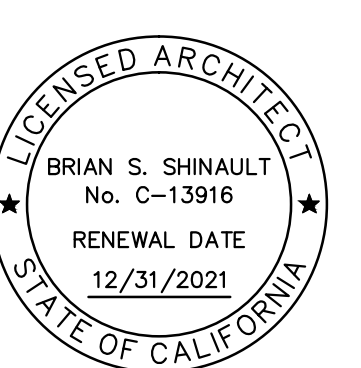
LOT 1 UNIT A	LOT 2 UNIT A	LOT 3 UNIT B
BUILDING 1,372 sf	BUILDING 1,372 sf	BUILDING 1501 sf
DRIVEWAY 200 sf	DRIVEWAY 200 sf	DRIVEWAY 323 sf
WALKS/STAIRS 110 sf	WALKS/STAIRS 110 sf	WALKS/STAIRS 76 sf
PORCH 224 sf	PORCH 224 sf	PORCH 192 sf
1,906 sf	1,906 sf	2,096 sf

PROJECT TOTAL	PARCEL SIZE=	15,000sf
BUILDING 4,245 sf	LAND CLASSIFICATION=	CLASS 7
DRIVEWAY 723 sf	ALLOWABLE COVERAGE=	4,500sf
WALKS/STAIRS 296 sf	EXISTING COVERAGE=	9,294sf
PORCH 640 sf		
5,904 sf		



SITE PLAN SCALE: 3/16" = 1'-0"

MAJOR REMODEL FOR:
ST. JOESPH LAND TRUST
SAB JOSE / RIVERSIDE
SOUTH LAKE TAHOE
APN: # 26-082-05



JOB No: 2075
DRAWN BY: BSS
CHECKED BY: BSS
DATE PREPARED: -
SCALE: AS NOTED
FILE:

DRAWING No:

C1.0

OF SHEETS

